



MEMORANDUM

TO: Transportation Services Committee
FROM: Kathleen Llewellyn-Thomas, P.Eng.
Commissioner of Transportation Services
DATE: February 6, 2013
RE: December 2012 York Region Transit/Viva Ridership Statistics

This memorandum provides an overview of the monthly York Region Transit/Viva (YRT/Viva) ridership statistics for December 2012. YRT/Viva revenue ridership in December reached 1.8 million, representing an increase of approximately 847,000 revenue riders, or 89 per cent, compared with December 2011. Total revenue ridership for 2012 is 22,156,781.

2011 Labour Disruption

The increase in December 2012 ridership compared with December 2011 can be attributed to the labour disruption from October 24, 2011 to February 3, 2012 involving Miller Transit, First Canada, York BRT (Veolia) and their operators and maintenance staff. Veolia Southwest and TTC continued providing transit service during the labour disruption.

December Service Improvements

In addition to service changes made in September 2012, the following service changes were made in December to continue improving on-time performance and match service demand:

- To provide additional services to Vaughan Mill Mall, Route 760 – Vaughan Mills/Wonderland weekend service continued to operate between Finch GO Bus Terminal and Vaughan Mills Mall Terminal. Also, all day weekday services were provided between December 24 and 28, excluding December 25, 2012.
- Seasonal route, Route 59 – The ROC services were reinstated on December 24 to provide services to the Recreational Outdoor Campus in Georgina.
- Runtime adjusted on Route 7 – Martin Grove to improve on-time performance.
- To improve services for Sutton area, two early southbound trips departing from the Queensway and Simcoe in Keswick were adjusted to depart from High Street and Burke on Route 50 – The Queensway.

Employment

The national unemployment rate declined 0.4 per cent from December 2011 (7.5%) to December 2012 (7.1%)^[1]. York Region is located within the Employment Insurance Economic Region of Toronto which recorded an unemployment rate decrease of 0.1 per cent from December 2011 (8.5%) to December 2012 (8.4%)^[2].

Gas Prices

Average gasoline prices in December 2012 increased \$0.02 per litre (\$1.20 per litre)^[4] from December 2011 (\$1.18 per litre)^[3].

Mobility Plus

In December 2012, Mobility Plus carried approximately 1,250 additional passengers, an increase of 4.9 per cent over December 2011. Approximately 57 additional trips were operated per day. December daily ridership experienced a normal reduction due to the seasonal closing of day programs and averaged 1,178 passengers per day.

In 2012, the Mobility Plus overall ridership increased by 32,800 passengers to 369,147 or 9.7 per cent over 2011. This increase is primarily attributed to an increase in midday, evening, and “Family of Service” trips taken by customers.

Kathleen Llewellyn-Thomas, P.Eng.
Commissioner of Transportation and Community Planning

Notes:

[1] Labour Force Survey. December 2012, *Statistics Canada*. Retrieved from <http://www.statcan.gc.ca/subjects-sujets/labour-travail/lfs-epa/lfs-epa-eng.htm>. Retrieved date: January 10, 2013.

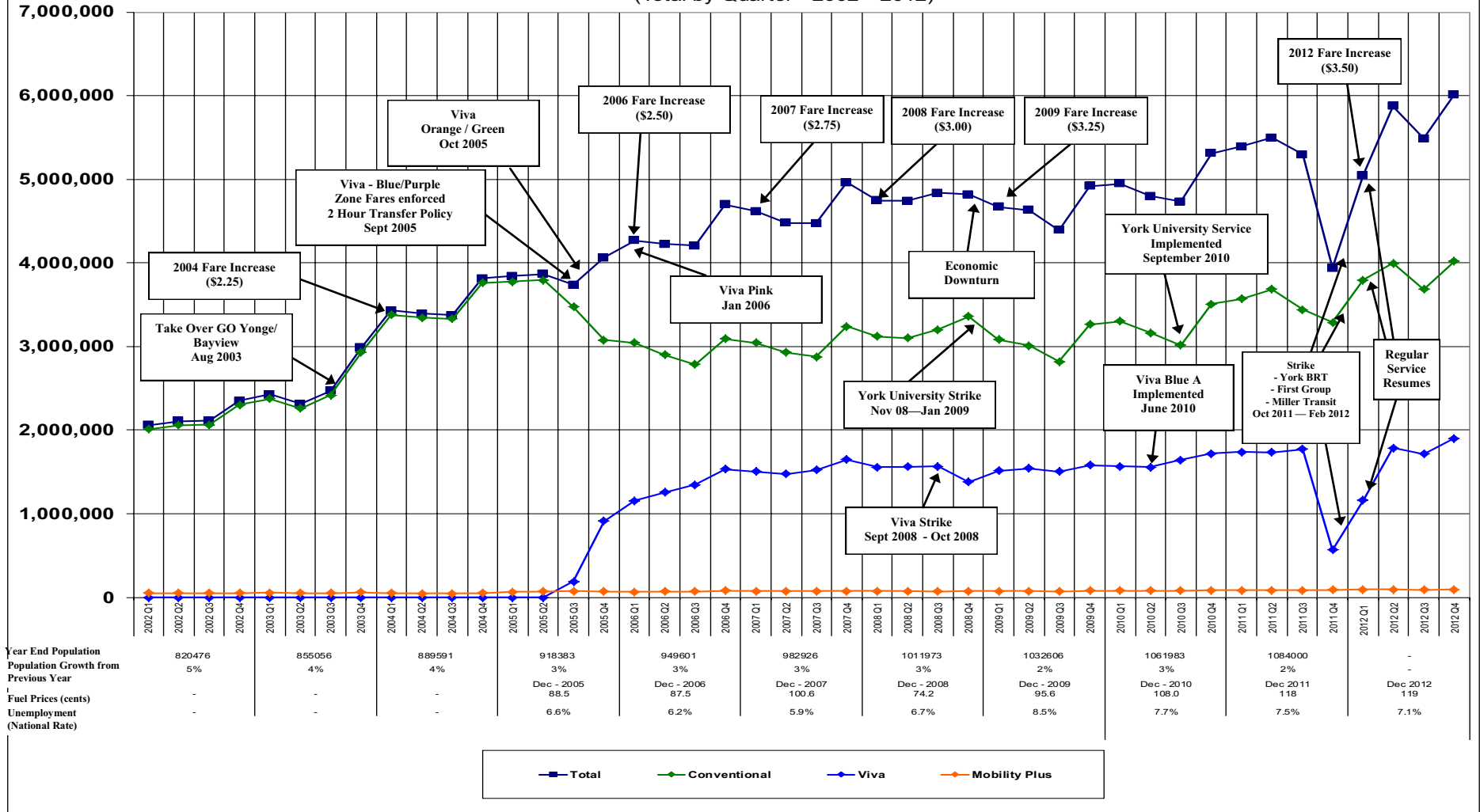
[2] EI Economic Region of Toronto – Unemployment Rates for the EI Economic Regions . *Human Resources and Skills Development Canada*. Retrieved from <http://srv129.services.gc.ca/rbin/eng/rates.aspx?id=2012#data>. Retrieved date: January 10, 2013.

[3] Fuel Price Data. (2011). *Ministry of Energy*. Retrieved from <http://www.energy.gov.on.ca/en/fuel-prices/fuel-price-data-historical/?fuel=rg&yr=2011>. Retrieved date January 10, 2013.

[4] Fuel Price Data. (2012). *Ministry of Energy*. Retrieved from <http://www.energy.gov.on.ca/en/fuel-prices/fuel-price-data/?fuel=reg&yr=2012>. Retrieved date January 10, 2013.

Revenue Boardings

(Total by Quarter 2002 - 2012)



Note:

- All population figures are year-end: Source: York Region Planning Department based on Statistics Canada and CMHC Housing Completion data
- Quarterly fuel price source: Minister of Energy (<http://www.mei.gov.on.ca/en/energy/oilandgas/?page=fuel-prices>)
- Unemployment Rates : (<http://www.statscan.gc.ca/subjects-sujets/labour-travail/lfs-epa/lfs-epa-eng.htm>)

YORK REGION TRANSIT / VIVA - MONTHLY RIDERSHIP SUMMARY
December 2012

Dec-12	19 weekdays, 6 Saturdays, 6 Sunday/Holidays
Dec-11	20 weekdays, 7 Saturdays, 4 Sunday/Holidays

rev. 14/1/2013

YRT Route #	Route Name	2011 ^[3]			TOTAL BOARDINGS (MONTH)			TOTAL BOARDINGS (YEAR TO DATE)			2012 ^[3/4]			Notes
		Avg Wkdy Boardings	Avg Sat Boardings	Avg Sn/Hol Boardings	2011	2012	Percentage ('12 vs '11)	2011	2012	Percentage ('12 vs '11)	Avg Wkdy Boardings	Avg Sat Boardings	Avg Sn/Hol Boardings	
1 ^[1]	Highway 7	0	0	0	0	43,012	n/a	386,993	511,917	32.3%	1,897	713	419	Ridership impact - 2011 contractor labour disruption; Viva purple ridership migration to Route 1 due to temporary detour via High Tech Road
2 ^[1]	Milliken	0	0	0	0	42,171	n/a	475,845	543,417	14.2%	1,882	713	317	Ridership impact - 2011 contractor labour disruption
2A	14th Ave	0	0	0	0	14,264	n/a	169,457	184,558	8.9%	747	0	0	Ridership impact - 2011 contractor labour disruption
3 ^[1]	Thornhill - York U.	2,105	587	675	48,058	34,421	-28.4%	495,768	566,280	14.2%	1,609	422	181	Increased ridership in 2011; migration from Viva purple during labour disruption
8	Kennedy Rd	0	0	0	0	32,537	n/a	320,694	428,691	33.7%	1,405	537	416	Ridership impact - 2011 contractor labour disruption
9 ^[1]	Ninth Line	0	0	0	0	6,034	n/a	34,703	52,247	50.6%	315	0	0	Ridership impact - 2011 contractor labour disruption. Route restructured July 2012; Ridership migration from Route 15
15	Stouffville Local	0	0	0	0	n/a	n/a	19,447	n/a	n/a	n/a	n/a	0	Route discontinued July 2012; Ridership migration to Route 9
18	Bur Oak	0	0	0	0	16,884	n/a	187,548	217,565	16.0%	856	95	0	Ridership impact - 2011 contractor labour disruption
40	Unionville Local	3	2	0	69	10,711	15423.2%	115,247	141,923	23.1%	502	111	71	Ridership impact - 2011 contractor labour disruption; Dial-A-Ride service after 8:15 p.m. (Monday to Saturday 2011)
41	Markham Local	3	1	0	63	7,395	11638.1%	76,830	80,298	4.5%	357	51	40	Ridership impact - 2011 contractor labour disruption; Dial-A-Ride service after 7:40 p.m. (Monday to Saturday 2011)
42	Bercy South Unionville	0	0	0	0	2,729	n/a	34,533	31,788	-7.9%	143	0	0	Ridership impact - 2011 contractor labour disruption
45	Mingay	0	0	0	0	1,454	n/a	14,578	19,476	33.6%	76	0	0	Ridership impact - 2011 contractor labour disruption
201	Markham GO Shuttle	0	0	0	0	1,489	n/a	19,405	18,340	-5.5%	78	0	0	Ridership impact - 2011 contractor labour disruption
202	Unionville GO Shuttle	0	0	0	0	2,157	n/a	29,498	27,525	-6.7%	113	0	0	Ridership impact - 2011 contractor labour disruption
203	Milliken GO Shuttle	0	0	0	0	1,182	n/a	15,174	16,127	6.3%	62	0	0	Ridership impact - 2011 contractor labour disruption
300 ^[1]	Business Express	0	0	0	0	6,468	n/a	52,641	84,663	60.8%	338	0	0	Ridership impact - 2011 contractor labour disruption. Viva pink ridership migration to Route 300 due to vivaNext construction
301 ^[1]	Markham Express	0	0	0	0	2,997	n/a	71,179	63,273	-11.1%	157	0	0	Ridership impact - 2011 contractor labour disruption. Route restructured July 2012; Ridership migration to New Route 304
302 ^[1]	Unionville Express	0	0	0	0	3,143	n/a	37,739	52,291	38.6%	165	0	0	Ridership impact - 2011 contractor labour disruption; General growth
303 ^[1]	Bur Oak Express	0	0	0	0	5,344	n/a	55,115	84,164	52.7%	280	0	0	Ridership impact - 2011 contractor labour disruption. Route restructured July 2012; General growth
304	Mount Joy Express	n/a	n/a	n/a	n/a	4,827	n/a	n/a	16,340	n/a	253	0	0	New route introduced July 2012; Ridership migration from Route 301 & Route 303
522	Markham Community Bus	145	119	0	3,519	1,604	-54.4%	26,488	24,722	-6.7%	66	56	0	Increased ridership in 2011 during the labour disruption
	Markham Total	2,256	709	675	51,709	240,823	365.7%	2,638,882	3,165,605	20.0%	11,301	2,698	1,444	
TTC 17A ^[1]	Birchmount	198	0	0	3,753	3,743	-0.3%	54,662	51,522	-5.7%	197	0	0	Stable ridership
TTC 24D, 224B/C/D ^[1]	Vic Park North (Woodbine)	1,059	0	0	20,121	22,555	12.1%	237,243	282,380	19.0%	1,141	89	57	General corridor growth
TTC 68B ^[1]	Warden North	952	454	253	22,330	23,505	5.3%	266,634	289,658	8.6%	975	554	276	General corridor growth
TTC 102D ^[1]	Markham Rd	995	345	248	22,463	24,113	7.3%	264,637	307,049	16.0%	1,037	383	352	General corridor growth
TTC 129A ^[1]	McCowan North	2,543	1,465	949	62,801	67,323	7.2%	765,146	783,775	2.4%	2,781	1,429	985	Decreased employment travel
	TTC (Markham) Total	5,747	2,264	1,450	131,468	141,239	7.4%	1,588,321	1,714,384	7.9%	6,131	2,455	1,670	
	Markham & TTC Total	8,003	2,973	2,125	183,177	382,062	108.6%	4,227,203	4,879,989	15.4%	17,432	5,153	3,114	
4/4A ^[1]	Major Mackenzie	3,797	1,572	1,064	88,799	88,283	-0.6%	1,040,072	1,287,765	23.8%	3,810	1,497	1,047	Stable ridership
5 ^[1]	Clark	1,530	567	0	32,775	32,386	-1.2%	391,508	463,263	18.3%	1,562	428	0	Stable ridership
7 ^[1]	Martin Grove	716	122	0	14,612	18,741	28.3%	218,354	264,577	21.2%	934	122	0	Service adjusted Sept 24th to provide service on Martin Grove Road; Route restructured July 2012
10 ^[1]	York U. (Woodbridge)	334	58	82	7,280	6,720	-7.7%	101,230	107,701	6.4%	308	79	52	Increased ridership in 2011; migration from Viva orange during labour disruption. Route restructured July 2012
11	Woodbridge	77	0	0	1,489	n/a	n/a	19,442	n/a	n/a	n/a	n/a	0	Route discontinued July 2012
12	Pine Valley	314	132	0	6,977	9,617	37.8%	99,807	120,995	21.2%	442	177	0	Reduced service in 2011 during labour disruption; general corridor growth
13	Islington Ave	341	184	0	7,810	9,440	20.9%	100,888	134,747	33.6%	453	113	0	Ridership migration from Route 10
20 ^[1]	Jane	2,325	1,596	1,122	61,792	62,015	0.4%	842,722	990,128	17.5%	2,499	1,385	868	Stable ridership
22/22A ^[1]	King City	0	0	0	0	17,311	n/a	123,808	189,421	53.0%	890	55	0	Ridership impact - 2011 contractor labour disruption; increased service frequency September 2012
23 ^[1]	Thornhill Woods	859	0	0	16,502	14,665	-11.1%	224,350	228,302	1.8%	765	0	0	Increased ridership in 2011;
27	Highway 27	0	0	0	0	n/a	n/a	13,945	n/a	n/a	n/a	n/a	0	Route discontinued September 2011; Route 28 service available
28	Zenway-Hwy.27	38	0	0	731	842	15.2%	9,292	15,891	71.0%	44	0	0	Ridership migration from Route 27
77 ^[1]	Hwy 7 - Centre St	4,744	2,126	1,391	112,527	96,067	-14.6%	1,154,816	1,390,712	20.4%	4,143	1,716	1,052	Increased ridership in 2011; migration from Viva orange, blue during labour disruption
99 (incl. 98E, 98/99) ^[1]	Yonge South	7,473	4,739	4,075	196,967	65,981	-66.5%	1,305,204	1,210,563	-7.3%	2,478	938	2,150	Increased ridership in 2011; migration from Viva blue during labour disruption
360 ^[1]	Maple Express	323	0	0	6,471	5,563	-14.0%	92,406	86,301	-6.6%	282	0	0	Decreased employment travel
760	Vaughan Mills/Wonderland	0	0	0	n/a	4,674	n/a	n/a	9,101	n/a	0	371	372	Seasonal service reinstated May 2012; Monday to Sunday service during 2012 holiday season excluding December 25, 2012.
	Vaughan Total	22,871	11,096	7,734	554,732	432,305	-22.1%	5,737,844	6,499,466	13.3%	18,610	6,881	5,541	
TTC 35-D ^[1]	Jane	1,480	286	0	29,836	29,230	-2.0%	333,089	384,123	15.3%	1,426	356	0	Decreased employment travel
TTC 37-D ^[1]	Islington	124	0	0	2,347	2,736	16.6%	29,208	32,516	11.3%	144	0	0	General corridor growth
TTC 105/105-B ^[1]	Dufferin North	1,848	829	577	43,539	50,304	15.5%	523,729	562,632	7.4%	2,208	780	612	Stable ridership
TTC 107-C/D/B/F ^[1]	Keele North	2,986	760	423	63,823	65,651	2.9%	775,787	818,665	5.5%	3,065	708	528	Decreased employment travel
TTC 160 ^[1]	Bathurst North	745	700	526	21,502	18,906	-12.1%	257,241	259,855	1.0%	762	413	325	Stable ridership
TTC 165-D/F ^[1]	Weston Road North	1,825	1,199	857	47,011	44,890	-4.5%	492,536	574,748	16.7%	1,738	1,132	846	Decreased employment travel
	TTC (Vaughan) Total	9,006	3,774	2,383	208,056	211,717	1.8%	2,411,589	2,632,538	9.2%	9,343	3,389	2,311	
	Vaughan & TTC Total	31,877	14,870	10,117	762,788	644,022	-15.6%	8,149,433	9,132,004	12.1%	27,953	10,270	7,852	

* Route crosses municipal boundaries.

	YRT Route #	Route Name	2011 [3]			TOTAL BOARDINGS (MONTH)			TOTAL BOARDINGS (YEAR TO DATE)			2012 [3][4]			
			Avg Wkly Boardings	Avg Sat Boardings	Avg Sn/Hol Boardings	2011	2012	Percentage ('12 vs '11)	2011	2012	Percentage ('12 vs '11)	Avg Wkly Boardings	Avg Sat Boardings	Avg Sn/Hol Boardings	
Richmond Hill	81	Inspiration	0	0	0	0	4,835	n/a	35,485	45,197	27.4%	254	0	0	Ridership impact - 2011 contractor labour disruption; route restructured July 2012
	82	Valleymede-Spadina	0	0	0	0	7,785	n/a	104,119	94,412	-9.3%	409	0	0	Ridership impact - 2011 contractor labour disruption
	83	Trench	0	0	0	0	18,724	n/a	219,069	236,499	8.0%	956	86	0	Ridership impact - 2011 contractor labour disruption; Route restructured July 2012. Route 83A services converted to rush hour service only
	84A/84C	Oak Ridges	18	9	0	396	3,263	724.0%	45,585	37,931	-16.8%	166	17	0	Ridership impact - 2011 contractor labour disruption; Dial-A-Ride service during midday and evening and on Saturdays
	85/85A/85B [1]	16th Ave/Rutherford	201	0	0	3,852	107,854	2699.9%	1,104,955	1,353,386	22.5%	4,533	2,302	1,238	Ridership impact - 2011 contractor labour disruption; Ridership attributed to Route 463 - Vellore School Special
	86	Weldrick-Newkirk	0	0	0	0	15,092	n/a	149,454	184,894	23.7%	738	171	0	Ridership impact - 2011 contractor labour disruption; Route restructured July 2012
	87 [1]	Langstaff Local	0	0	0	0	15,086	n/a	203,210	202,629	-0.3%	764	89	0	Ridership impact - 2011 contractor labour disruption; Route restructured July, 2012
	88/88A/88E [1]	Bathurst/Bathurst Express	3,448	1,834	1,550	87,034	101,388	16.5%	1,124,183	1,334,017	18.7%	4,078	2,176	1,687	Ridership migration from Route 22 during midday due to Route 22 restructuring
	589/590	RH Community Bus	115	133	64	3,385	3,950	16.7%	44,855	37,524	-16.3%	155	105	62	Route restructured September 2012
	90/90B [1]	Leslie	0	0	0	0	76,217	n/a	733,435	951,115	29.7%	3,536	943	500	Ridership impact - 2011 contractor labour disruption
	91/91A/91B/91E [1]	Bayview South/Express	4,086	2,876	1,203	103,056	87,364	-15.2%	1,134,659	1,310,829	15.5%	3,805	1,458	961	Increased ridership in 2011 due to labour disruption
	240	Mill Pond GO Shuttle	0	0	0	0	2,132	n/a	29,523	27,028	-8.5%	112	0	0	Ridership impact - 2011 contractor labour disruption
	241	Bev Acres GO Shuttle	0	0	0	0	1,388	n/a	19,666	17,158	-12.8%	73	0	0	Ridership impact - 2011 contractor labour disruption
242	N Richvale GO Shuttle	0	0	0	0	611	n/a	10,063	8,527	-15.3%	32	0	0	Ridership impact - 2011 contractor labour disruption	
243	Redstone GO Shuttle	0	0	0	0	3,199	n/a	33,809	40,571	20.0%	168	0	0	Ridership impact - 2011 contractor labour disruption	
	Richmond Hill Total	7,868	4,852	2,817	197,723	448,888	127.0%	4,992,070	5,881,717	17.8%	19,779	7,347	4,448		
Aurora	31 [1]	Aurora North	0	0	0	0	1,792	n/a	15,344	16,913	10.2%	94	0	0	Ridership impact - 2011 contractor labour disruption; Route restructured July 2012
	32	Aurora South	4	7	0	118	10,610	8891.5%	92,127	106,546	15.7%	550	21	0	Ridership impact - 2011 contractor labour disruption; Dial-A-Ride service during weekday and Saturday evenings
	33/33A	Wellington	0	0	0	0	8,410	n/a	103,949	121,653	17.0%	407	105	0	Ridership impact - 2011 contractor labour disruption
	34	Industrial Parkway	0	0	0	0	n/a	n/a	6,544	n/a	n/a	n/a	n/a	n/a	Route discontinued July 2012 due to low ridership
	Aurora Total	4	7	0	118	20,812	17537.3%	217,964	245,112	12.5%	1,051	126	0		
Newmarket, East Gwill., Georgina	44	Bristol - London	3	1	0	63	5,721	8981.0%	44,090	53,382	21.1%	285	48	0	Ridership impact - 2011 contractor labour disruption; Dial-A-Ride service during weekday and Saturday evenings. Route restructured July 2012
	50	Queensway	n/a	n/a	n/a	n/a	26,341	n/a	n/a	79,374	n/a	1,062	528	438	New all day service introduced as of September 2012 to replace GO Route 69
	51	Keswick Local	0	0	0	0	4,039	n/a	45,783	49,226	7.5%	202	28	0	Ridership impact - 2011 contractor labour disruption
	52 [1]	Holland Landing Local	0	0	0	0	5,441	n/a	63,742	71,491	12.2%	241	136	0	Ridership impact - 2011 contractor labour disruption
	53	Woodspring-Clearmeadow	0	0	0	0	n/a	n/a	70,320	n/a	n/a	n/a	n/a	n/a	Ridership impact - 2011 contractor labour disruption; Route merged with 44 north of Davis Drive and with 57/57A south of Davis Drive in July 2012
	54 [1]	Bayview North	0	0	0	0	8,748	n/a	77,333	92,208	19.2%	431	84	0	Ridership impact - 2011 contractor labour disruption
	55/55B	Davis Dr.	0	0	0	0	26,603	n/a	309,262	326,467	5.6%	1,133	543	274	Ridership impact - 2011 contractor labour disruption; Route restructured April 2012; Route 55B services converted to rush hour service
	56	Gorham-Eagle	0	0	0	0	10,180	n/a	108,807	113,640	4.4%	449	151	115	Ridership impact - 2011 contractor labour disruption
	57/57A	Mulock Dr.	0	0	0	0	20,355	n/a	146,752	193,854	32.1%	921	283	177	Ridership impact - 2011 contractor labour disruption; Route restructured July 2012, merged with Route 53 south of Davis Dr
	58/58A	Leslie North	0	0	0	0	2,333	n/a	16,290	27,308	67.6%	122	0	0	Ridership impact - 2011 contractor labour disruption; Route restructured July 2012
	59	The ROC	0	0	0	0	32	n/a	0	32	n/a	5	0	12	Service Started on December 24.
	GO Rte 69 [1]	Sutton GO Bus	165	105	41	4,011	n/a	n/a	65,982	n/a	n/a	n/a	n/a	n/a	Ridership migration to Route 50 - Queensway; Route discontinued in September 2012
	98 [1]	Yonge North	0	0	0	0	20,400	n/a	226,977	246,726	8.7%	766	505	451	Ridership impact - 2011 contractor labour disruption; Route 98/99 Late night services available
	220	Keswick GO	0	0	0	0	n/a	n/a	2,864	n/a	n/a	n/a	n/a	n/a	Route discontinued July 2012 due to low ridership
	222	Aurora-Nmkt GO Shuttle	0	0	0	0	1,109	n/a	13,037	10,295	-21.0%	58	0	0	Ridership impact - 2011 contractor labour disruption
	223	Newmarket GO Shuttle	0	0	0	0	305	n/a	4,315	3,846	-10.9%	16	0	0	Ridership impact - 2011 contractor labour disruption
520/521	Newmarket Community Bus	103	43	15	2,338	1,845	-21.1%	19,293	23,194	20.2%	84	24	15	Increased ridership in 2011 due to labour disruption	
	Newmarket Total	271	149	56	6,412	133,452	1981.3%	1,214,847	1,291,043	6.3%	5,775	2,330	1,482		
	YRT SUB-TOTAL	48,023	22,851	15,115	1,150,218	1,629,236	41.6%	18,801,517	21,429,864	14.0%	71,990	25,226	16,896		
Viva	blue (incl. blueA) [1]	Yonge Corridor	0	0	0	0	462,067	n/a	4,616,991	5,736,462	24.2%	17,924	10,695	7,047	Ridership impact - 2011 contractor labour disruption
	purple [1]	Highway 7 Corridor	0	0	0	0	165,279	n/a	2,061,935	2,081,681	1.0%	6,381	4,053	2,878	Temporary detour via High Tech Road, ridership migration to Route 1 and 300. Ridership impact - 2011 contractor labour disruption
	green [1]	Markham North-South Link	0	0	0	0	12,313	n/a	158,895	154,887	-2.5%	643	0	0	Ridership impact - 2011 contractor labour disruption
	orange (incl. Zum) [1]	Vaughan North-South Link	724	284	207	16,702	53,871	222.5%	789,122	739,508	-6.3%	2,194	1,227	762	Ridership impact - 2011 contractor labour disruption. Brampton Zum services available
	pink [1]	Finch - Unionville	0	0	0	0	35,677	n/a	534,032	452,654	-15.2%	1,862	0	0	Temporary detour via High Tech Road, ridership migration to Route 1 and 300. Ridership impact - 2011 contractor labour disruption
	Viva SUB-TOTAL	724	284	207	16,702	729,207	4266.0%	8,160,975	9,165,191	12.3%	29,004	15,975	10,687		

[1] Route crosses municipal boundaries.

[2] Viva ridership data adjustment is derived on a monthly basis, and compensates for temporary malfunctions of on-board automatic passenger counter (APC) equipment, and/or for operators not logging onto the Init APC system.

[3] A "0" ridership value indicates service is not/was not operated due to labour disruption.

"Total Boardings" include PRESTO values

Total Boardings	YRT/VIVA SYSTEM TOTAL	48,747	23,135	15,322	1,166,920	2,358,443	102.1%	26,962,492	30,595,056	13.5%	100,994	41,201	27,583
Rev. Boardings	YRT/VIVA SYSTEM TOTAL				951,948	1,797,455	88.8%	19,849,554	22,156,782	11.6%	76,971		

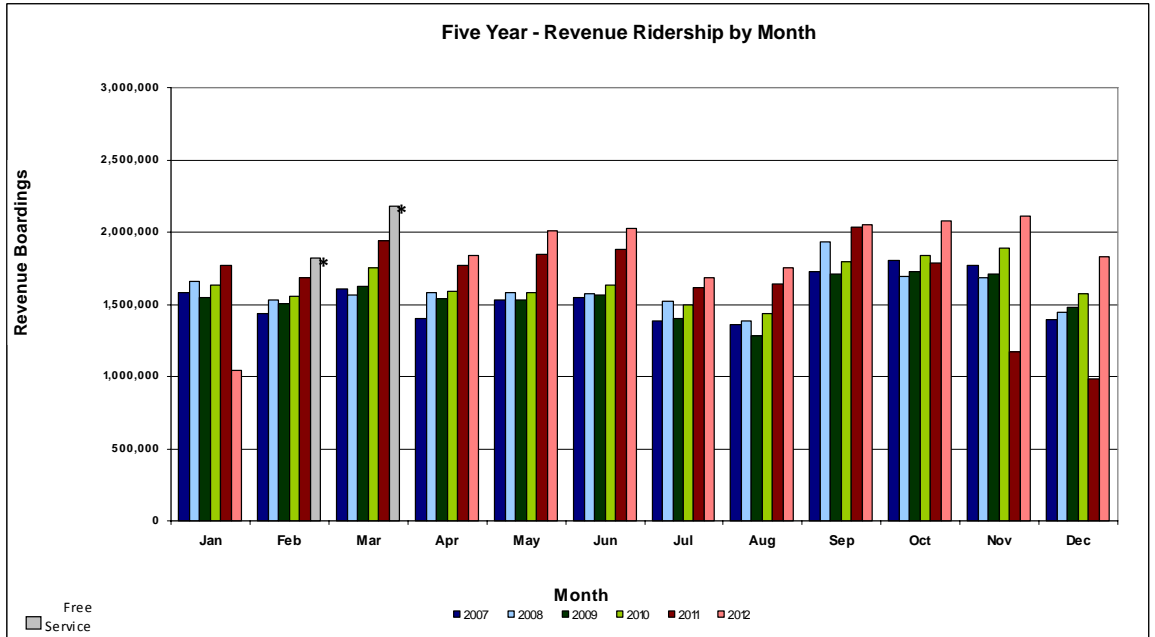
Notes: 1. System-wide transfer rate = Revenue Boardings / Total Boardings = **23.8%**

By Route Class														
Base Routes (incl. Viva)	43,463	21,921	14,486	1,052,502	2,039,834	93.8%	23,213,391	26,495,626	14.1%	85,389	38,786	26,663		
Local Routes	4,598	919	757	98,705	264,590	168.1%	3,172,031	3,448,408	8.7%	13,108	1,859	459		
Express Routes	323	0	0	6,471	28,342	338.0%	309,080	387,032	25.2%	1,475	0	0		
Community Bus Routes	363	295	79	9,242	7,399	-19.9%	90,636	85,440	-5.7%	305	185	77		
Seasonal Routes	0	0	0	0	4,674	n/a	0	9,101	n/a	0	371	372		
GO Shuttle Routes	0	0	0	0	13,572	n/a	177,354	169,417	-4.5%	712	0	0		
TOTAL, by Route Class	48,747	23,135	15,322	1,166,920	2,358,411	102.1%	26,962,492	30,595,024	13.5%	100,989	41,201	27,571		

YRT/Viva

2012 Revenue Ridership Summary

Conventional and BRT services including contracted TTC services north of Steeles Avenue



* February & March 2012 forecasted revenue ridership due to free transit service.

January	1,740,807	1,012,247 ^[1]	-41.9%	-41.9%	41,317 ^[1]
February	1,731,401	1,792,375 ^{[2]*}	3.5%	-19.2%	85,590
March	1,866,013	2,147,532 ^{[3]*}	15.1%	-7.2%	84,566
April	1,730,828	1,810,604	4.6%	-4.3%	76,203
May	1,872,981	1,975,926	5.5%	-2.3%	77,250
June	1,810,380	1,995,535	10.2%	-0.2%	80,996
July	1,619,467	1,735,811	7.2%	0.8%	68,902
August	1,616,538	1,719,028	6.3%	1.4%	66,856
September	2,008,877	2,025,547	0.8%	1.4%	88,499
October	1,757,737 ^[1]	2,066,781	17.6%	3.0%	83,134
November	1,142,577 ^[1]	2,077,941	81.9%	7.7%	83,338
December	951,948 ^[1]	1,797,455	88.8%	11.6%	76,971

^[1] Transit labour strike October 24, 2011 to February 3, 2012

^[2] Free transit service begins February 4, 2012. Projected weekday revenue ridership based on historic transfer rate of 28.1 per cent

^[3] Free transit service begins February 4, 2012. Projected weekday revenue ridership based on 40 per cent transfer rate.

^[4] 2011 revenue ridership adjusted for 2012 comparison.

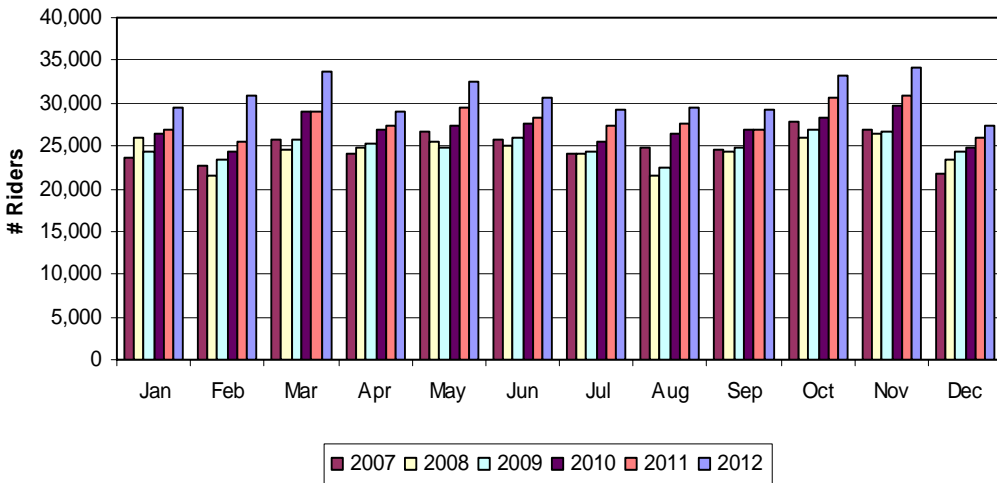
* Projections based on total boardings and transfer rate.

YRT/Viva

2012 Ridership Summary

Specialized Services – Mobility Plus

Five Year-Actual Ridership by Month



Month	2011 Ridership	2012 Ridership	Monthly Change ('12 vs. '11)	Year to Date (YTD) Change	Average Weekday Revenue Ridership 2012
January	26,948	29,467	9.3%	9.3%	1237
February	25,612	30,865 ^[1]	20.5%	14.8%	1368
March	28,948	33,661 ^[1]	16.3%	15.3%	1356
April	27,412	29,070	6.0%	13.0%	1207
May	29,553	32,566	10.2%	12.4%	1321
June	28,214	30,667	8.7%	11.8%	1291
July	27,311	29,284	7.2%	11.1%	1293
August	27,701	29,501	6.5%	10.5%	1185
September	26,980	29,301	8.6%	10.3%	1310
October	30,738	33,328	8.4%	10.1%	1344
November	30,874	34,102	10.5%	10.2%	1394
December	26,069	27,335	4.9%	9.7%	1178
YTD	336,360	369,147			

^[1] Free transit attributed to high increase in ridership.